

# WILLOWS POND SHOPPING CENTER

## SOUTH HILL - PUYALLUP, WA

### Leasing Opportunity

#### QUICK POINTS:

##### ADDRESS:

101- 37th Avenue SE  
Puyallup, Washington

##### AVAILABLE SPACE:

Suite A - 6 (in-line) 1,600 SF

##### DATE AVAILABLE:

Immediately

##### 2008 DEMOGRAPHICS:

(5 mile radius)

Population: 146,109

Average Income: \$73,941

(1 mile radius):

# of Businesses: 645

# of Employees: 8,452



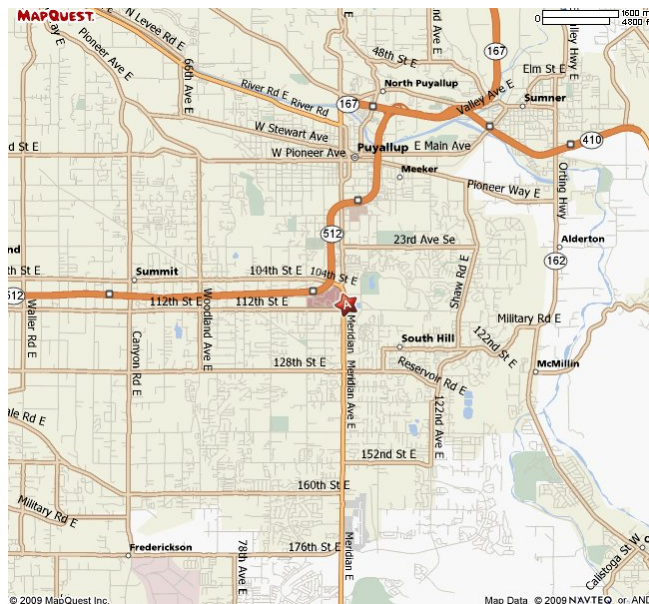
For further information regarding this property please call:

**Gregory D. Close**  
**Stephanie Fasano**  
**PACIFIC ASSET ADVISORS,**  
**INC.**

600 -108th Avenue NE, #530  
Bellevue, WA 98004  
(425) 990-6200 ext. 104 (office)  
(425) 990-6207 (fax)  
gregory@paadvisors.com  
stephanie@paadvisors.com

#### SITE DESCRIPTION

- Located next to:
  - Top Food & Drug
  - Lowe's Hardware
  - South Hill Mall
- Join Kinko's, Shari's and Sleep Country
- **A - 6 \$28.00 psf + NNN**



The above information has been secured from sources believed to be reliable, however, no representations are made to its accuracy. Prospective tenants or buyers should consult their professional advisors and conduct their own independent investigation. Properties are subject to change in price and/or availability without notice.